

NOTE: THE INSTRUCTIONS BELOW CONTAIN VALUABLE INSTALLATION & SAFETY DATA WHICH SHOULD BE READ BEFORE INSTALLING THE STEERING SYSTEM.

LM-H-201 LITE 55 STEERING SYSTEM CONSIST OF :

- STEERING HELM Fig.1 (Sr.no.1)
- MOUNTING BRACKET Fig.1 (Sr.no.2)
- BEZEL CUP Fig.1 (Sr.no.6)

The Multiflex cable suitable for LM-H-201 Helm is SC-18 and is supplied separately.

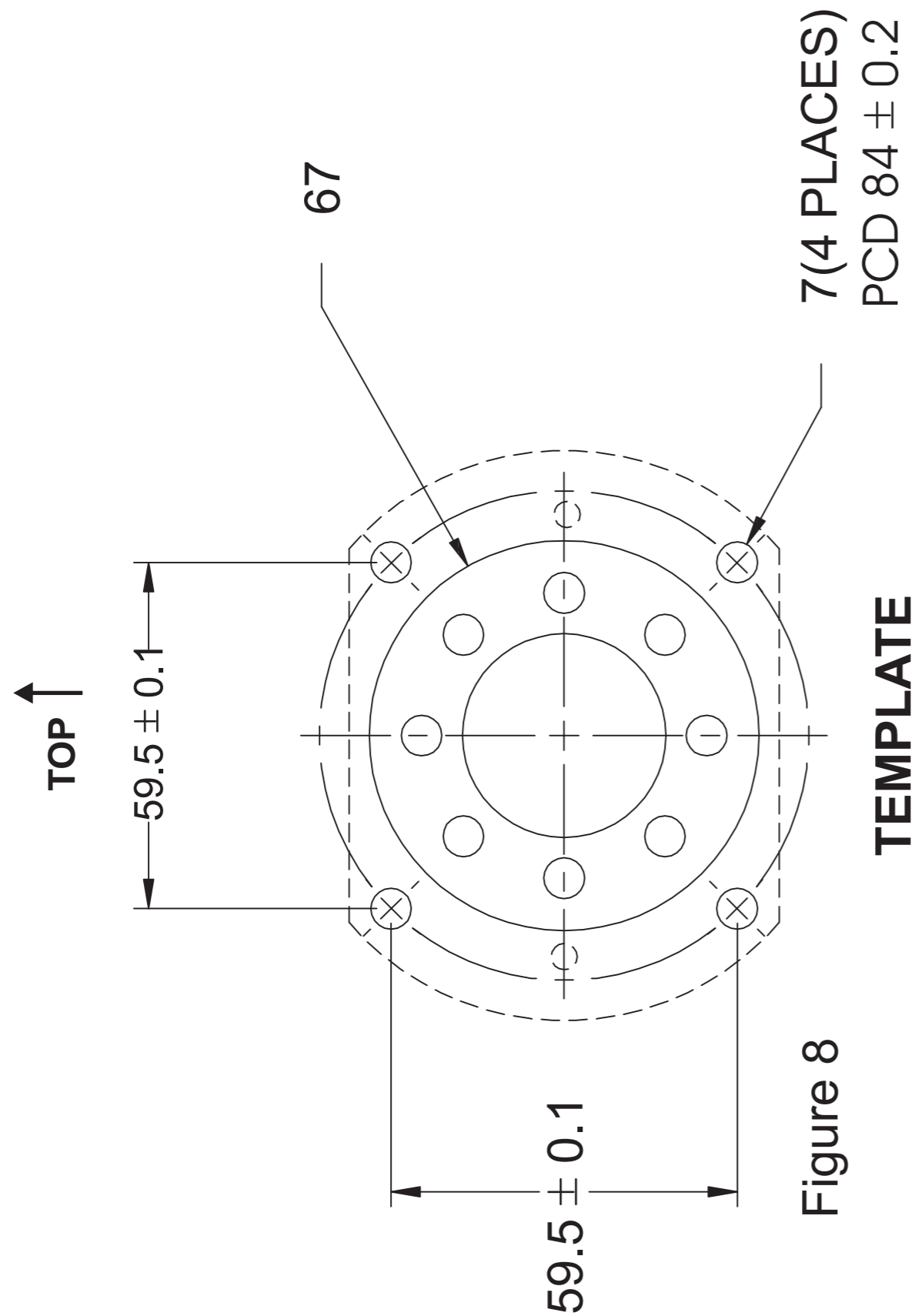
INSTALLATION PROCEDURE:

STEERING HELM:

- Select the location on the dashboard where the Helm is to be mounted.
- While selecting the location ensure adequate availability of space for wheel movement above the dashboard. Also ensure adequate space for Helm and Cables mounting below the dashboard.(Refer Fig.2 for space requirements)
- Drill the dashboard using the template provided with this Instruction sheet Fig.8.
- Install the Helm mounting bracket(Fig.3) on the dashboard using the Bolts/Washers/Nylock Nuts provided with the Helm as per specifications below:
 - o Bolts : M6 x 35mm (Sr. No. 5 on part list)
 - o Washers : (Sr. No. 3 on part list)
 - o Nylock Nuts : M6(Sr. No. 4 on part list)
 Use maximum torque 50 inch/lbs to tighten the nuts.
(Helm can be mounted in four different positions - every 90 degrees. Select Helm position so as to ensure cable is installed with minimum number of bends.)
- Install the Helm(Fig.4) on the bracket using the M6 nylock nuts(Sr. No. 4 on part list) provided with the assembly. Use maximum torque of 50 inch/lbs to tighten the nuts.
- Install the retaining clip(Sr. No. 8 on part list) provided with the assembly to the required friction(Fig.5).
- Install the Bezel Cup(Sr. No. 6 on part list) on the dashboard using the screws(Sr. No. 7 on part list) provided with the assembly(Fig.5).
- Mount the steering wheel on the helm shaft using the bolt(Sr. No. 10 on part list)/washer(Sr. No. 9 on part list) provided with the assembly(Fig.5).
- Ensure the steering wheel diameter doesn't exceed the recommended diameter of 8 inch.

CABLE CONNECTION TO HELM:(Refer Fig.6)

- Remove the plastic sleeve covering the helical loose end of the cable.
- Select the path of the cable routine ensuring minimum number of bends.
- Ensure the cable gets minimum of 8 inch radius at the bends.
- Sharp or frequent bends will make the Steering hard which will result in premature cable failure.
- Insert the loose end of the cable in the helm. Rotate the steering wheel to pull the cable in the helm till the conduit cap comes in contact with the helm.
- Tighten the cable to the helm using the nut provided on the helm.
Use maximum torque of 130 inch/lbs to tighten the nut.
- Cover the loose end of the cable with the plastic protective sleeve.



CHECKINGS OF STEERING SYSTEM:

- Check the system installation by rotating the steering wheel. Clockwise rotation should move to starboard and Anti-Clockwise rotation should move to the port. The cable movement direction should correspond as per the figure7
- Check the entire Steering System after first two hours of running for loose bolts, nuts, and fasteners.

PREVENTIVE MAINTENANCE :

- Steering system should be serviced every 30 days when in sea water and every 90 days when in fresh water.
 - o Check all metal parts for corrosion.
 - o Check the cable for damage conduit.
 - o Check for loose bolts, nuts & fasteners.
- Replace all corroded parts.
- Replace cable if damaged.
- Grease all exposed parts with marine grease.

IMPORTANT :

- Read and follow the instruction carefully.
- Use the supplied part as elaborated the instruction sheet.
- Multiflex is not responsible for improper installation or for use of parts other than those supplied in the assembly.

Part List		
Sr .No.	Description	Qty
1	Helm	1
2	Bracket	1
3	Washer	4
4	Nut-M6	8
5	Bolts-M6x35mm	4
6	Bezel Cup	1
7	Screw	1
8	Reatainer clip	2
9	Washer	1
10	Bolts	1

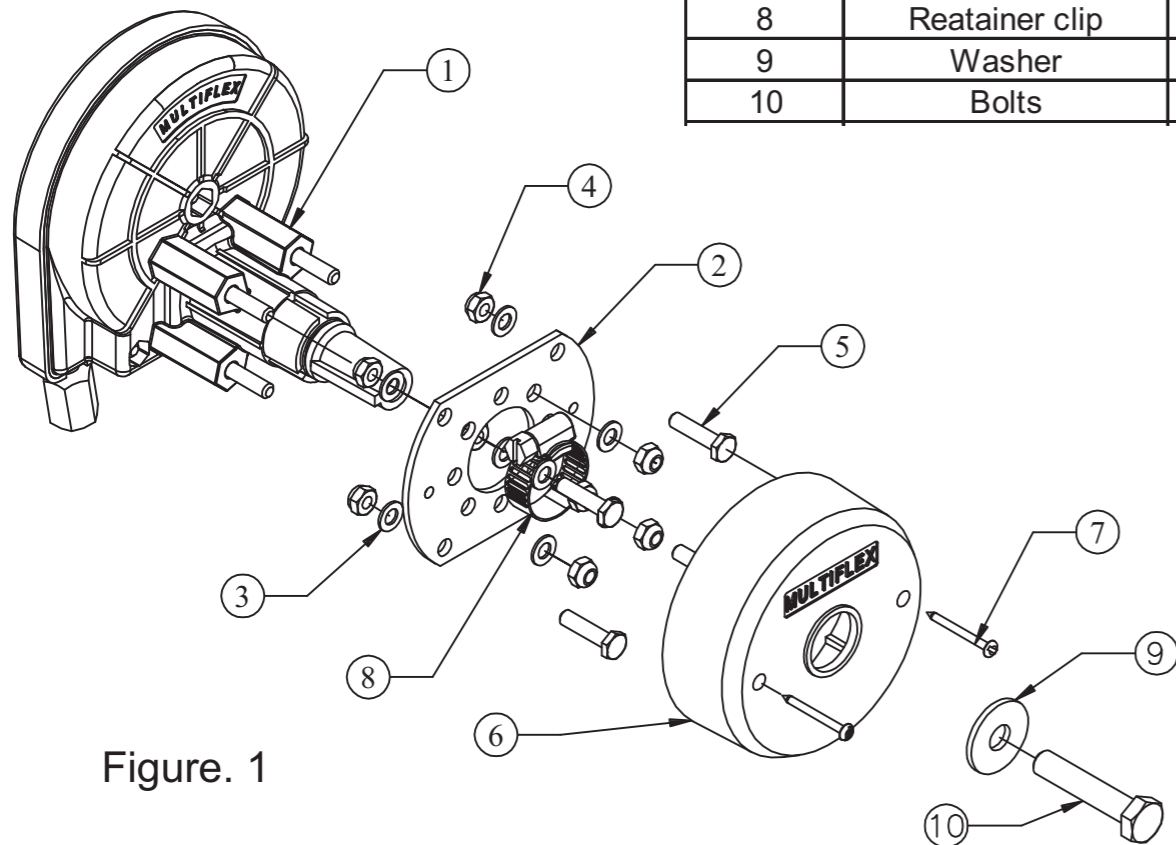


Figure. 1

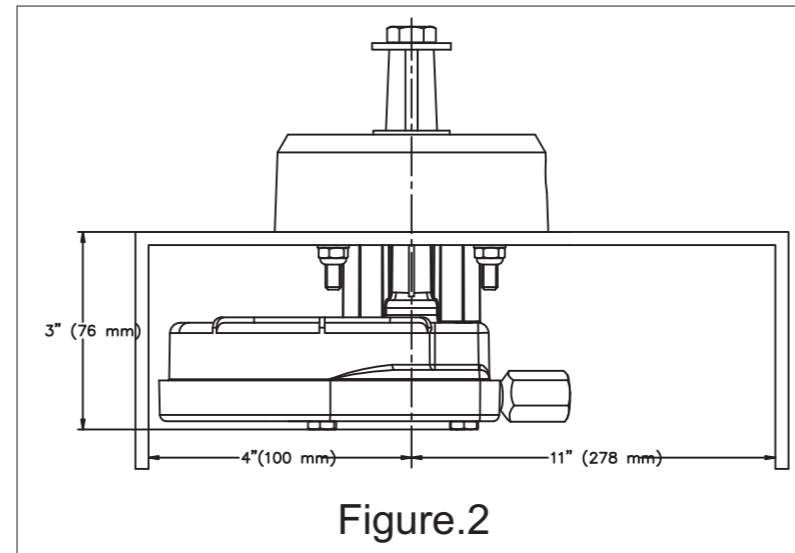


Figure.2

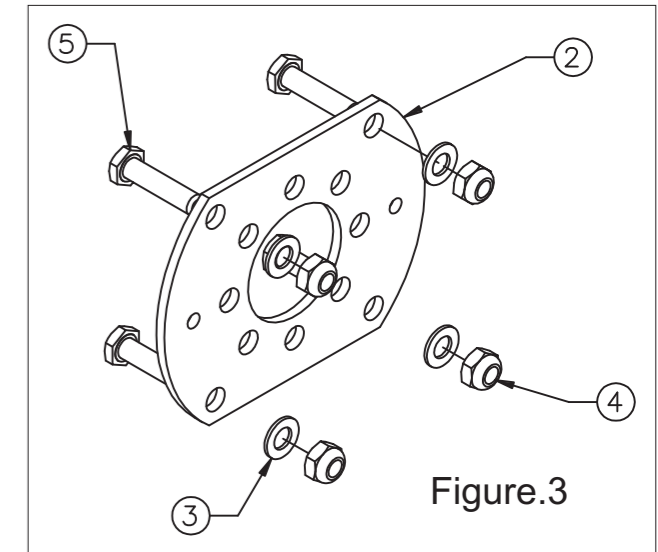


Figure.3

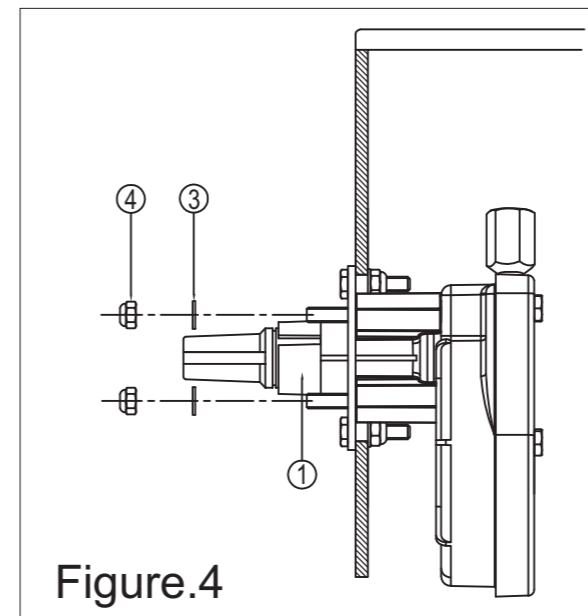


Figure.4

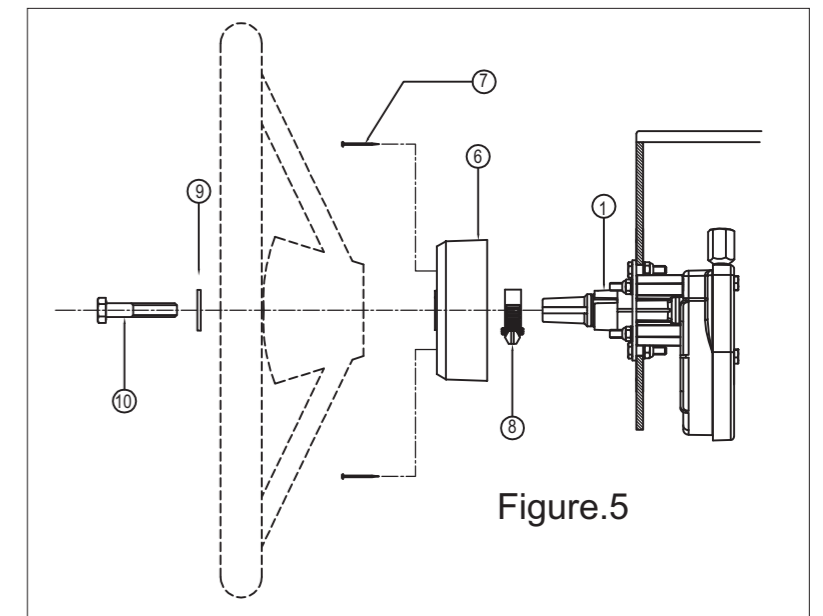


Figure.5

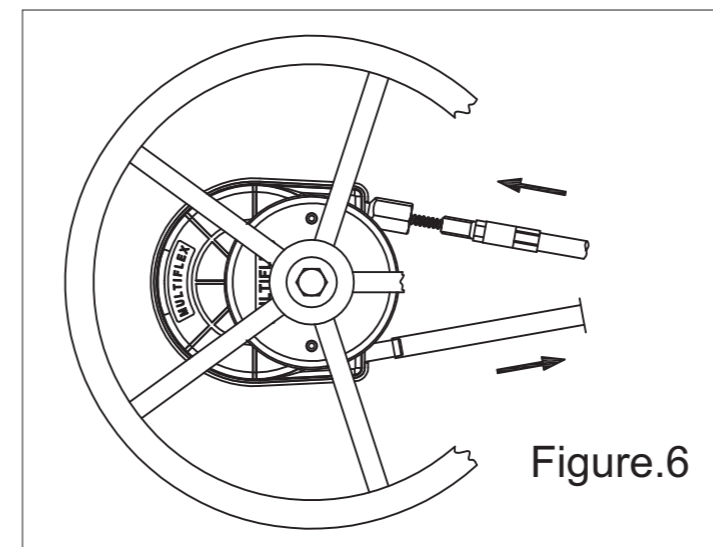


Figure.6

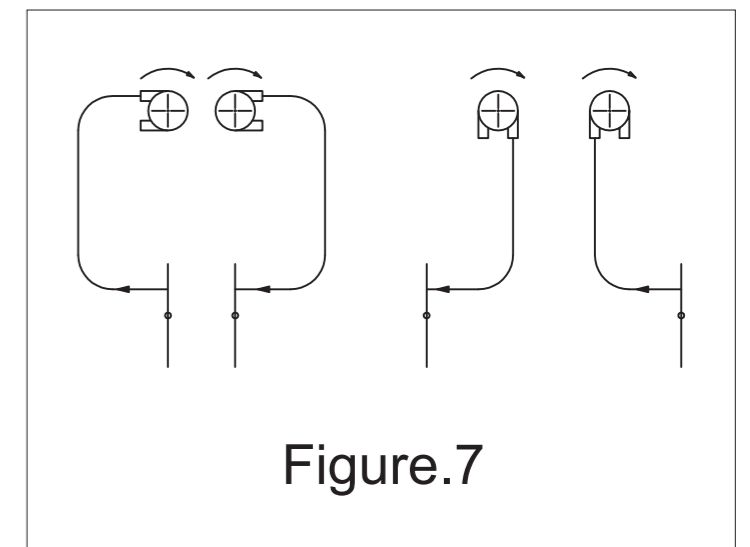


Figure.7