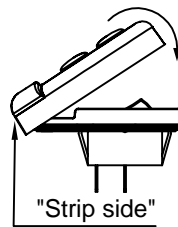


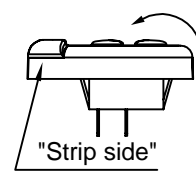
# INSTALLATION INSTRUCTIONS FOR CG2-2WF

1. Cut hole as per template. Use 2 screws supplied to retain the panel.
2. Connect the positive from the battery master switch into the connector supplied with the panel.
3. Fit panel backlight negative (black) to negative stud/buss bar (not supplied with panel).
4. Connect positive from appliance to the piggy back terminal on the selected switch and fit corresponding label (supplied in pack).
5. Fit negative from appliance to negative stud/buss bar.
7. To replace blown fuses, flip back cover of fuse holder as per drawing\* and pull out old fuse. Push in new fuse and close cover. (Note maximum fuse rating is 15A).

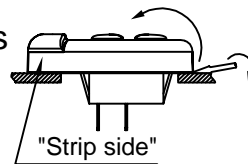
NB. The fuse holders are supplied with 15A blade type fuses.



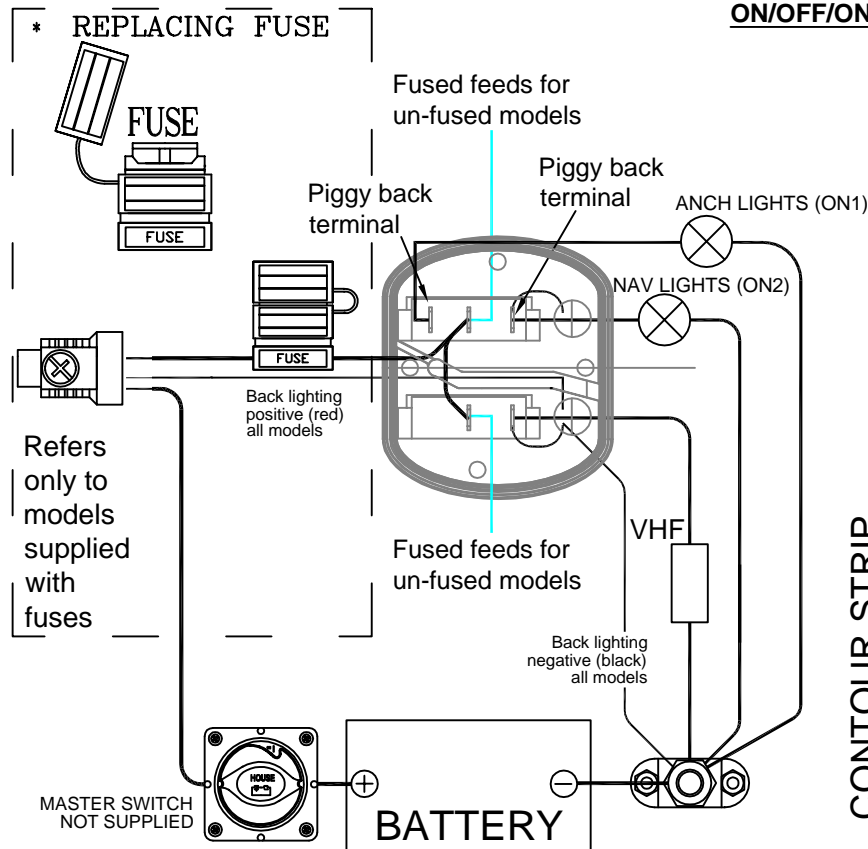
Fitting the lid to CG2 panels: Make sure to fit from the "strip" side first and "roll" on



Removing the lid from CG2 panels: (Unmounted): Hold panel securely in hand (by the switches) and "roll" cover off towards the strip side

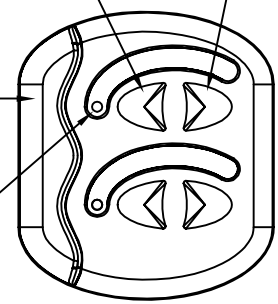


Removing the lid from CG2 panels: (mounted): Carefully place lever under lid at opposite side to the strip. Gently apply pressure to lever.



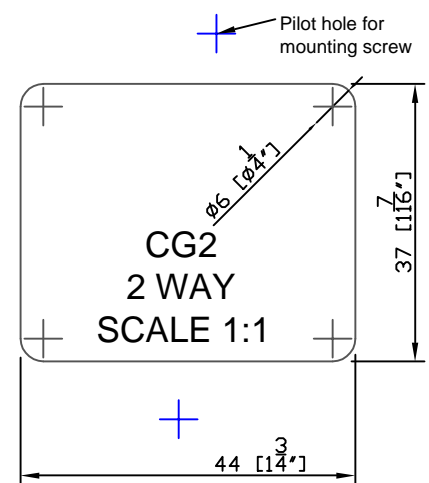
## ON/OFF/ON switch.

Press for ON Position 1  
Press once for OFF, then once again for ON Position 2



Systems On LED will be illuminated when in both ON positions

CONTOUR STRIP ALONG THIS SIDE



DATE	19/7/04	DWG No.	INST-HHA-CG2-2W-BT		
DRAWN	S PLAYER	TITLE: CONTOUR GENERATION 2 INSTRUCTIONS			
REV	DATE	DESCRIPTION	DRAWN	APPRVD	

CONTOUR GENERATION 2 INSTRUCTIONS

**BEP MARINE LTD.**  
 13 Tarndale Grove  
 Albany  
 Auckland 1310 N.Z.  
 PH 09 415 7261 FAX 09 415 9327  
 www.bepmarine.com