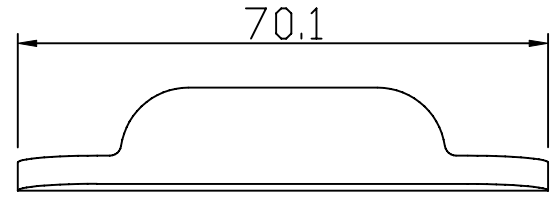
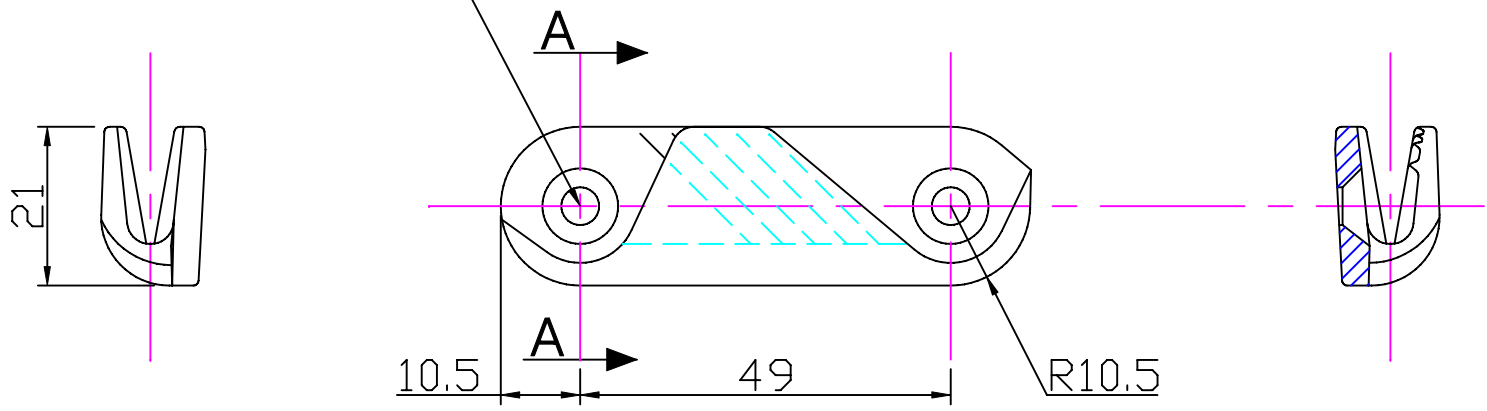


M4 4/4.2mm ϕ 3-6mm
 #8 (5/32") No.8 1/8" - 1/4"

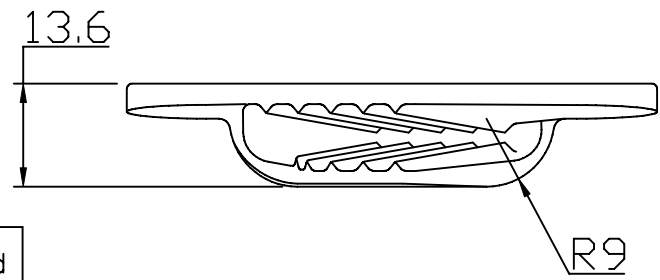
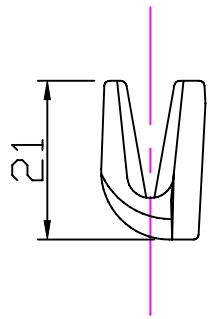
Notes: -
 For marine applications, use a silicone sealant or a bedding compound to avoid electrolytic action between the cleat and metal fastenings.



2 Holes ϕ 5.0
 countersunk ϕ 10.0x90°

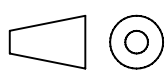


Section 'AA'



Clamcleats Limited
 Watchmead
 Welwyn Garden City
 Hertfordshire AL7 1AP
 England

Telephone +44 (0)1707 330101
 Fax +44 (0)1707 321269
<http://www.clamcleat-rope-cleats.com>



Scale 1:1
 All dimensions in mm.

Issue: 2. May 2006
 ID259.dwg

Material:
 Diecast Aluminium

Installation Drawing for:-
CL259
 Racing Fine Line
 (Port)